

Addendum

Date: 03.08.2024

To: All Bidders

CC: Stephanie Pielich - JJCA

From: Harold Hadlock - JJCA

Project: Sullivan County Freestanding MOB – 23987.02

Subject: Addendum 01



Addendum No. 01  
For  
Sullivan County Freestanding MOB

Issued to - All Bidders of Record

Date Issued:

This Addendum along with its attachments forms a part of the Contract Documents and modifies the Construction Documents, dated 02.28.2024, as noted below. The work reflected in this addendum is to be incorporated into the proposed Contract Sum and Time as if originally issued. Bidders must acknowledge receipt of this Addendum on the Bid Form.

This Addendum consists of ONE (1) page and ONE (1) attachment.

This addendum is in three parts as follows:

- Part I Clarifications
- Part II Pertaining to the Project Manual.
- Part III Pertaining to the Drawings

**PART I – CLARIFICATIONS:**

1. None

**PART II – PERTAINING TO THE PROJECT MANUAL:**

1. None

**PART III – PERTAINING TO THE DRAWINGS:**

1. Revised sheet ES1.1 dated 03.04.2024, to clarify scope of electrical site work.

ATTACHMENTS: (drawing sheets are tagged in title block with “Addendum No. 01”

- ES 1.1 Electrical Site Plan New Dated 03.04.2024

END OF ADDENDUM

Sullivan County Freestanding MOB - 23987.02  
Subject: Addendum 01  
Date:  
Page 2

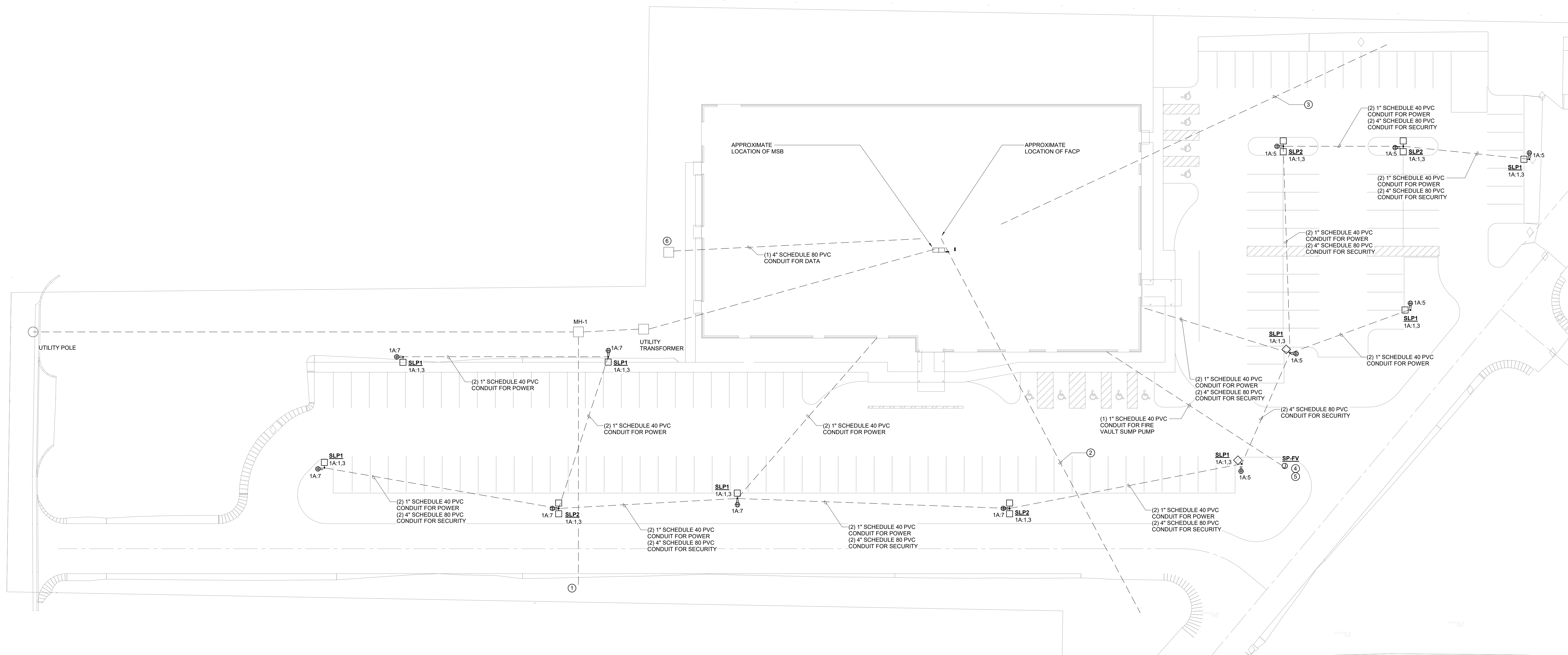


### CONSTRUCTION PHASING AND RESPONSIBILITY OF WORK NOTES

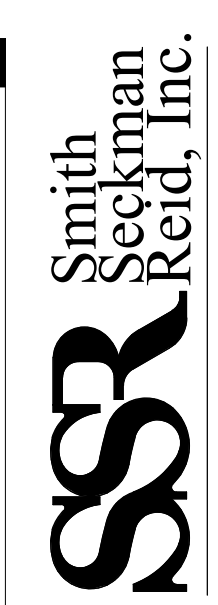
- A. PHASE 1B - WORK BY OTHERS**
- a. CONDUITS AND WIRE FROM UTILITY POLE TO MANHOLE 'MH-1'
  - b. CONDUITS WITH PULLSTRING FROM MANHOLE 'MH-1' TO CAPPED AND STAKED LOCATION INDICATED ON SITE PLAN
  - c. CONDUITS AND WIRE FROM MANHOLE 'MH-1' TO UTILITY TRANSFORMER
  - d. CONDUIT AND PULLSTRING FOR FUTURE CONNECTION TO HOSPITAL FACP FROM 5' OUTSIDE BUILDING TO LOCATION INDICATED ON SITE PLAN
  - e. POLE BASES
  - f. CONDUITS WITH PULLSTRINGS BETWEEN POLE BASES
  - g. CONDUITS WITH PULLSTRINGS FROM POLE BASES TO 5' OUTSIDE OF BUILDING
  - h. CONDUIT WITH PULLSTRING FROM FIRE VAULT TO WITHIN 5' OF BUILDING
  - i. CONDUITS WITH PULLSTRINGS FROM FUTURE EV CHARGING STATIONS TO WITHIN 5' OF BUILDING
- B. PHASE 2 - WORK BY ELECTRICAL CONTRACTOR**
- a. SECONDARY CONDUITS AND WIRE FROM UTILITY TRANSFORMER TO SWITCHBOARD 'MSB'
  - b. EXTEND CONDUITS FROM POLEBASES STUBBED 5' FROM BUILDING TO DESIGNATED PANELS
  - c. LIGHT POLES, POLE LIGHTING, AND POLE RECEPTACLES
  - d. ALL CONDUCTORS FOR POLE LIGHTING AND POLE RECEPTACLES
  - e. EXTEND FUTURE FIRE ALARM CONNECTION CONDUIT TO FACP IN BUILDING
  - f. EXTEND FUTURE EV CHARGING STATIONS CONDUITS FROM STUBBED 5' FROM BUILDING TO PANEL INDICATED ON PLANS
  - g. EXTEND CONDUIT FOR FIRE VAULT FROM 5' OUTSIDE OF BUILDING TO PANEL INDICATED ON PLAN
  - h. CONDUCTORS FOR FIRE VAULT SUMP PUMP 'SP-FV'
  - i. ALL OTHER WORK SHOWN ON SITE PLAN NOT INDICATED UNDER PHASE 1

### SHEET KEYED NOTES

1. CAP AND STAKE CONDUITS. CONDUITS SHALL BE EXTENDED TO NEW UTILITY TRANSFORMER IN SEPARATE PROJECT
2. PROVIDE 2" SCHEDULE 40 PVC CONDUIT FROM NEW FACP LOCATED IN ELEC ROOM 120 TO LOCATION INDICATED ON PLAN FOR FUTURE CONNECTION TO FACP IN HOSPITAL. CONDUIT SHALL BE CAPPED, STAKED, AND LABELED.
3. PROVIDE (2) 2" SCHEDULE 40 PVC CONDUITS WITH PULLSTRING FOR FUTURE EV CHARGING STATION POWER AND (2) 2" PVC SCHEDULE 40 CONDUITS WITH PULLSTRING FOR TELE/DATA. CONDUITS FOR POWER SHALL BE ROUTED TO PANELBOARD 1A IN ELEC ROOM 120 AND CONDUITS FOR TELE/DATA SHALL BE ROUTED TO I.T. 121. CONDUITS SHALL BE CAPPED, STAKED, AND LABELED.
4. NON-FUSED DISCONNECT SWITCH SHALL BE MOUNTED ADJACENT TO FIRE VAULT. REFER TO EXTERIOR DISCONNECT MOUNTING DETAIL ON SHEET ES-1 FOR ADDITIONAL INFORMATION.
5. TEMPORARY POWER SHALL BE PROVIDED AS PART OF A SEPARATE PROJECT. MAINTAIN TEMPORARY POWER UNTIL FINAL CONNECTION TO PERMANENT POWER IS COMPLETED.
6. PROVIDE 11"x18"x12" DEEP, UL LISTED, OPEN BOTTOM, PRE-CAST HANDHOLE WITH 4-BOLT GASKETED COVER WITH 'COMMUNICATIONS' LOGO FOR FUTURE USE. QUANTITY PART # BOX - PC1118B412, COVER - PC1118C612 OR APPROVED EQUALS.



**1 SITE PLAN**  
3/64" = 1'-0"



Freestanding Medical Office Building Shell for:  
**Sullivan County Community Hospital**  
Sullivan, Indiana



03.4.24

Sheet Re-Issue Log	
(Individual revisions clouded and labeled within each sheet)	
1	ADDENDUM 1 03/04/2024

Project Number  
**23987.02**

DATE  
**February 28, 2024**

**ES1.1**  
SITE PLAN - SHELL